

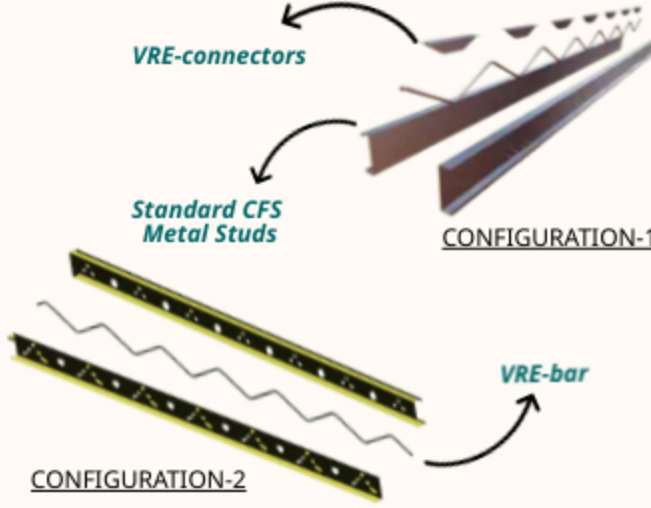


VRECAST WALL AND FLOOR SYSTEM

- Structural Integrity above standard
- Quality Assurance
- Low-Maintenance Costs & Long Term Durability
- Back-to-Back Channel Cold Form Steel Frame

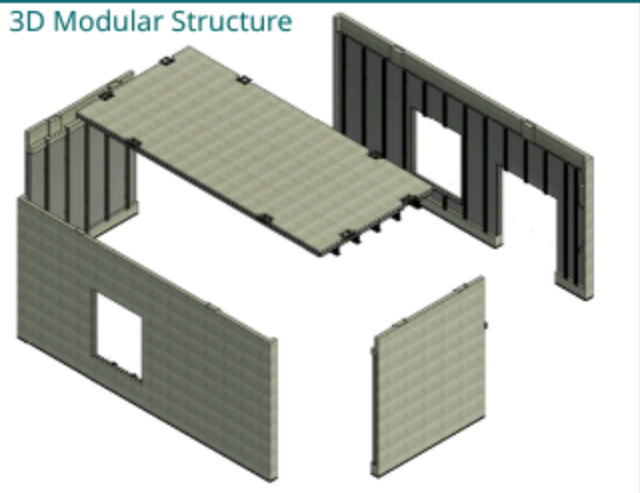
- Architectural Adaptability for Exterior & Interior finishes
- Superior Thermal Performance

- One step closer to net-zero emissions
- MEP Integration On-site or Off-site
- Production by most PCI certified facilities
- Follows PCI standards for Construction



- Lighter weight also means **larger panels, lower erection costs** and **faster schedules**. More panels per truck load **reduces shipping costs**.
- Cost-effective** option for insulation installation off-site using rigid foam or on-site using spray foam with higher R-values.
- Enables **faster on-site assembly** and **cleaner integration** of building services.
- Pre-cored Cold-Formed Steel openings** allow for easy installation of MEP systems.

3D Modular Structure



- Our panels offer superior **strength-to-weight ratio, enhanced thermal efficiency, and rapid installation advantages.**
- Cold-Formed Steel (CFS) strong-back system**
- Extensive **range of architectural finishes**
- Both wall & floor systems are **prefabricated, face-down poured panels.**



Exterior View



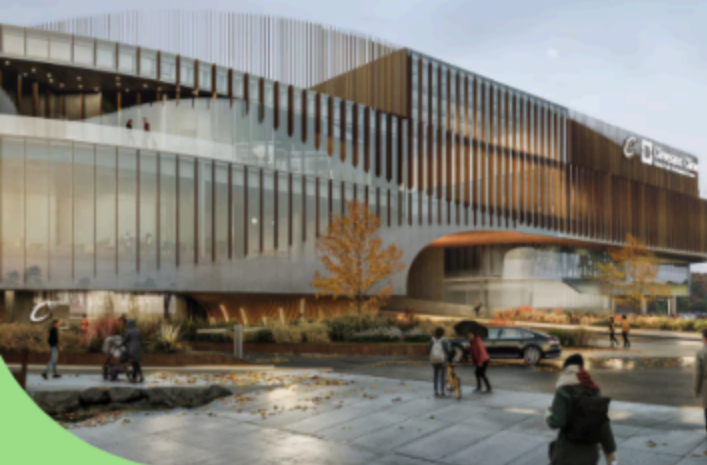
Panel Erection



Panel Alignment



Interior View



Case Study-1

Cleveland Clinic Global Peak Performance Center (GPPC)

Faced with retrained wall thickness and interior space limitations challenges, the original 4" precast wall spanning 14ft faced several structural design challenges with stresses exceeding allowable limits. The Vrecast Wall Panel System was implemented to deliver full structural integrity, thermal efficiency, and long-term durability within the existing wall profile.

Use of the Vrecast system eliminated the need for redesign and reconfiguration of the primary structure to accommodate concrete cladding, preserved the original architectural intent, and maintained the project schedule. As a result, the design team and general contractor selected Vrecast as the optimal system, demonstrating its efficiency, adaptability, and performance in complex structural and cladding applications.

Learn how we integrated the system to meet every demand.

Contact us:

 vgrchada@outlook.com

 +1 513-633-8863

 www.vrecast.com



13705 W Greenfield Ave, New Berlin, WI 53151

Visit our website: <https://www.vrecast.com>

Our Vision

To deliver the most cost-effective, highly resilient, and architecturally pleasing exterior finishes with high thermal performance exceeding minimum requirements, while taking a smart step forward toward achieving net-zero carbon emissions in certain application of constructions through our patented system.

Our Mission

To revolutionize construction with innovative, efficient, and sustainable solutions that enable a net-zero future.

Our Core Values

Excellence:

Top-quality with wide variety of exterior finishes for aesthetically pleasing architectural features and with high structural integrity solution that outperforms industry standards.








Efficiency:

Faster, highly cost-effective and thermal efficient processes without sacrificing quality.

Sustainability:

Eco-friendly practices for a greener future, and a smart step toward net-zero emissions.

Applications:

-  **Architectural Cladding**
-  **Structural VREcast Wall Panels**
-  **Structural VREcast Floor Panels**
-  **Total VREcast System**
-  **Modular VREcast System**
-  **Cast-in-place VREcast Floors**
-  **Cast-in-place VREcast Walls**

Who we serve:

Residential • Commercial • Light-Industrial
(Warehouses) • High-Rise • Hospitality •
Institutional

Why choose us?

All-In-One Wall System Engineered For Performance

Wide Variety of Exterior Architectural Finishes

High-Thermal Efficiency

Non-Combustible, High Resilient Smart Solutions

Light-Weight Structural Products

Accelerated Construction Timelines

Cost-Effective Manufacturing

